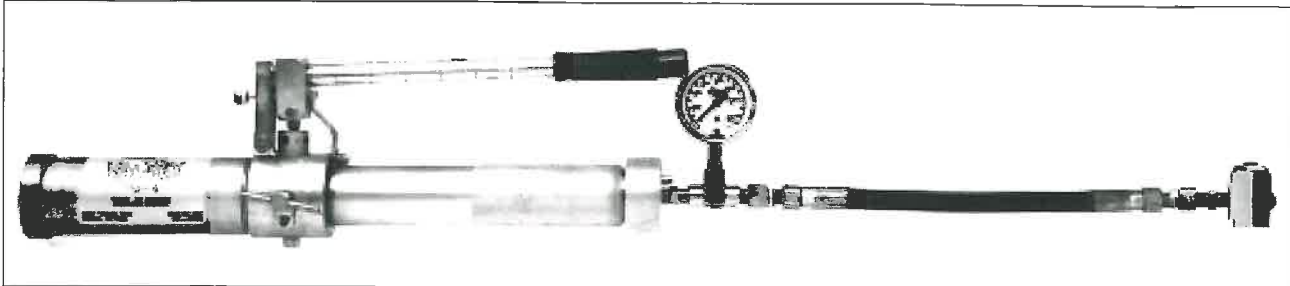


Val-Tex 1400ET



"Quality That Pays For Itself"

10,000 P.S.I. High Pressure Hydraulic Valve Lubrication Gun



Lube Sealant Size: J, P, CT12
PSI Rating: 10,000
Priming: Self-Priming Hydraulic
Delivery: 1 oz. / 44 strokes

Weight: 16 Lbs.
Gauge: Included
Lube Pack Compatible: Yes
Internal Relief Valve: Yes

The **Val-Tex 1400** is a rugged, light weight unit that is self priming and can be used in any position. Pressure is easily relieved by turning the by-pass valve one and one half revolutions allowing the coupler to be removed from the grease fitting. The hydraulic system is equipped with an internal hydraulic relief to provide maximum safety in the event an operator continues to pump after the gun has been depleted of lube sealant.

The **standard 1400** shipped as shown above, comes complete with lube pack adapter, hose tee, 15,000 P.S.I. 2 1/2 inch liquid filled stainless steel gauge, ball bearing swivel, hose center, and giant buttonhead coupler with nylon coupler washer. Options such as gauge guard, carrying strap, Z-swivel, 1/4 turn shutoff / bleeder valve, and variable hose lengths are available upon request. Repair kits are also available. Parts are interchangeable with most manufacturer's guns.

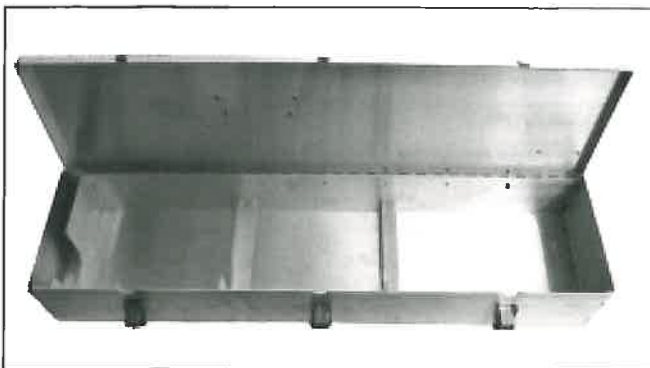
Special features include a slip link to help prevent damage due to over extension of the pump piston, handle latch assembly to protect the pump piston when the gun is not in use, graduated handle with one ounce markings to eliminate guesswork and waste during injection, and a special adapter for Lube Packs.

Consult the maintenance manual that is enclosed with every **Val-Tex 1400** for troubleshooting and repair procedures.

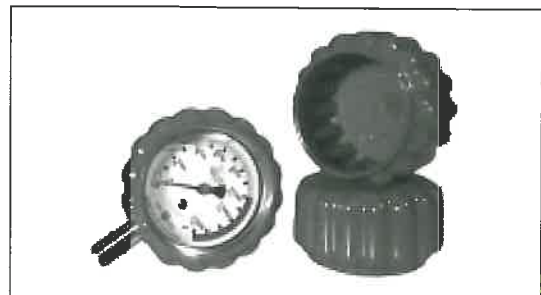
Warning: Use only UCON-500 hydraulic fluid in the gun. Do not carry the **1400** hydraulic gun by the handle.

Exchange Program for hydraulic lubrication guns is available. See page 13 for details.

Lubrication Gun Accessories



For maximum protection of your **hydraulic lubrication gun**, this **Gun Case** is constructed of easy to clean, durable aluminum with heavy-duty latches and carrying handle.



The **Val-Tex GC-250 Gauge Guard** is a wise investment to protect your gauge. It fits a 2 1/2" bottom mount gauge, which is standard on most Val-Tex equipment. The easy to install GC-250's tough construction provides impact resistance for the entire gauge. A UV resistant material helps to prevent the Gauge Guard from cracking due to exposure to the sun.

10600 FALLSTONE ROAD • HOUSTON, TEXAS 77099-4390 • ORDER 1-800-627-9771 • PHONE (281) 530-4848 • FAX (281) 530-5225 • WWW.VALTEX.COM